

- New building
- Demolition

SWISS EMBASSY, BEIJING
Sanlitun, Dongwujie 3, Beijing 100600, China

CONCEPT DESIGN

scale : 1:200
phase : schematic design
size : 740x600
reference level : ± 0.00 = 34 m

Client
Federal Department of
finance FDP
Federal Office for
Buildings and Logistics
FBL
Fellerstrasse 21
CH-3003 Berne
t. +41 58 463 26 98

Architect
Brauen Wälchli Architectes
Rue de Bourg 25
1003 Lausanne
t. 021 313 21 21
mail@brauenwaelchli.com

SITE PLAN

n° plan :
BEIJ18_31_PL_SITE_200_A

ARCHITECT PLAN

index	date	author	modifications
A	17.12.2018	CDL / MG / MSC	Base Plans

Landscape architect
Bureau de Paysage
Jean-Jacques Borgeaud
Avenue de Chailly 23
1012 Lausanne
t. 021 320 82 80
jjborgeaud@bluewin.ch

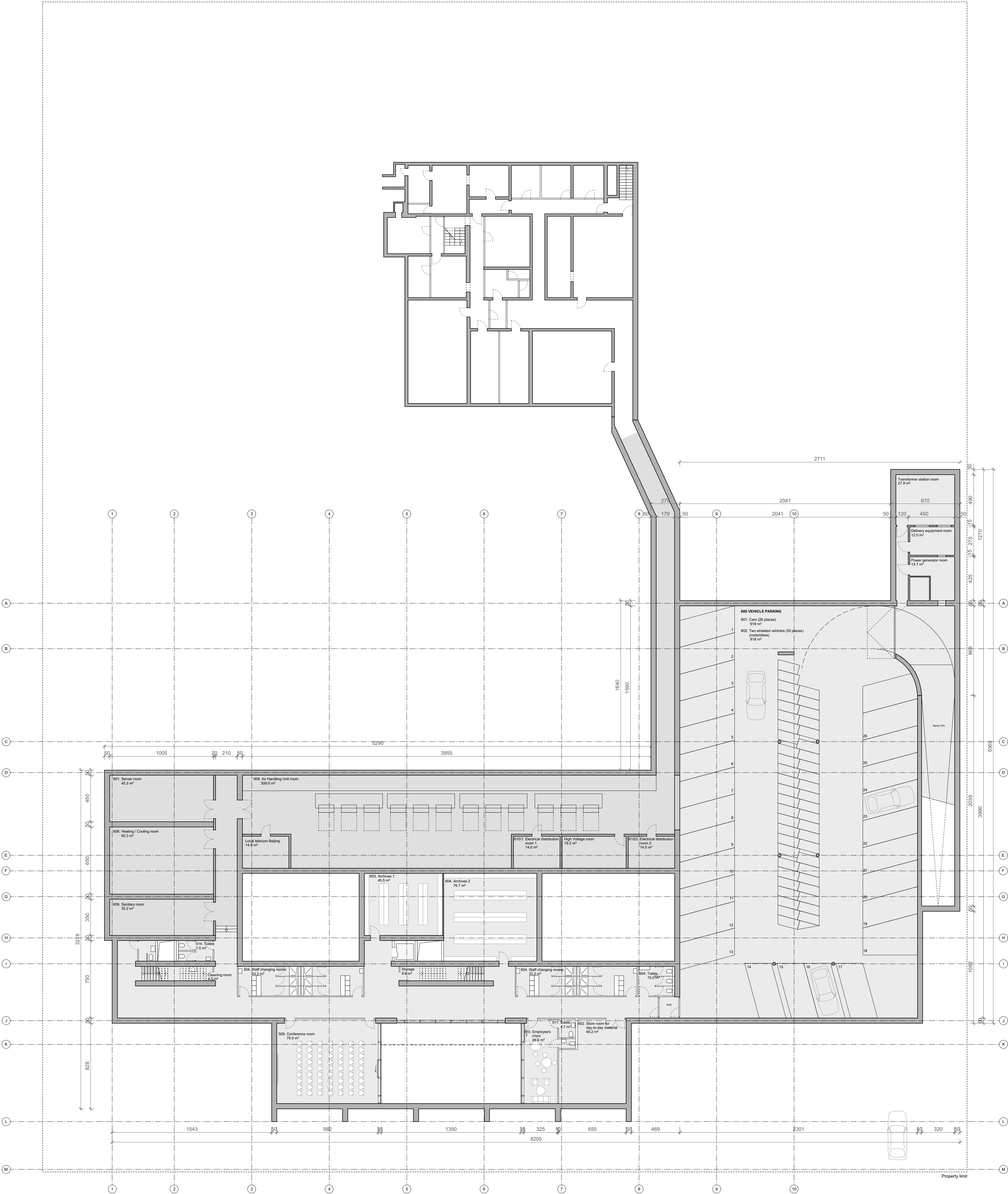
Structural engineer
Muttoni & Fernandez
Route du bois 17
1024 Ecublens
t. 021 691 84 70
info@mfic.ch

Facade engineer
Emmer Pfenninger Partner AG
Weidenstrasse 13
4142 Münchenstein
t. 061 416 96 96
info@eppag.ch

HVAC engineer
Efficiency-Thermique Sàrl
Rue de la Madeleine 31
1800 Vevey
t. 021 922 30 25
info@efficiency.tech

Sanitary engineer
Zanini - Baechli & Associés
avenue Ernest-Pictet 36
1203 Genève
t. 022 344 89 40
secretaire@zanini-baechli.ch

Electrical engineer
Marmy-pme sàrl
route de corsallettes 24
1772 Grolley
t. 026 552 52 52
info@marmy-pme.ch



SWISS EMBASSY, BEIJING

Sanlitun, Dongwujie 3, Beijing 100600, China

CONCEPT DESIGN

scale : 1:200
phase : schematic design
size : 740x600
reference level : ± 0.00 = 34 m

Client
Federal Department of
finance FDP
Federal Office for
Buildings and Logistics
FBL
Fellerstrasse 21
CH-3003 Berne
t. +41 58 463 26 98
mail@brauenwaelchli.com

Architect
Brauen Wälchli Architectes
Bureau de Paysage
Jean-Jacques Borgeaud
Avenue de Chailly 23
1012 Lausanne
t. 021 313 21 21
jjborgeaud@bluewin.ch

Structural engineer
Muttoni & Fernandez
Route du bois 17
1024 Ecublens
t. 021 691 84 70
info@mfic.ch

Facade engineer
Emmer Pfenninger Partner AG
Weidenstrasse 13
4142 Münchenstein
t. 061 416 96 96
info@eppag.ch

HVAC engineer
Efficiency-Thermique Sàrl
Rue de la Madeleine 31
1800 Vevey
t. 021 922 30 25
info@efficiency.tech

Sanitary engineer
Zanini - Baechli & Associés
avenue Ernest-Pictet 36
1203 Genève
t. 022 344 89 40
secretariat@zanini-baechli.ch

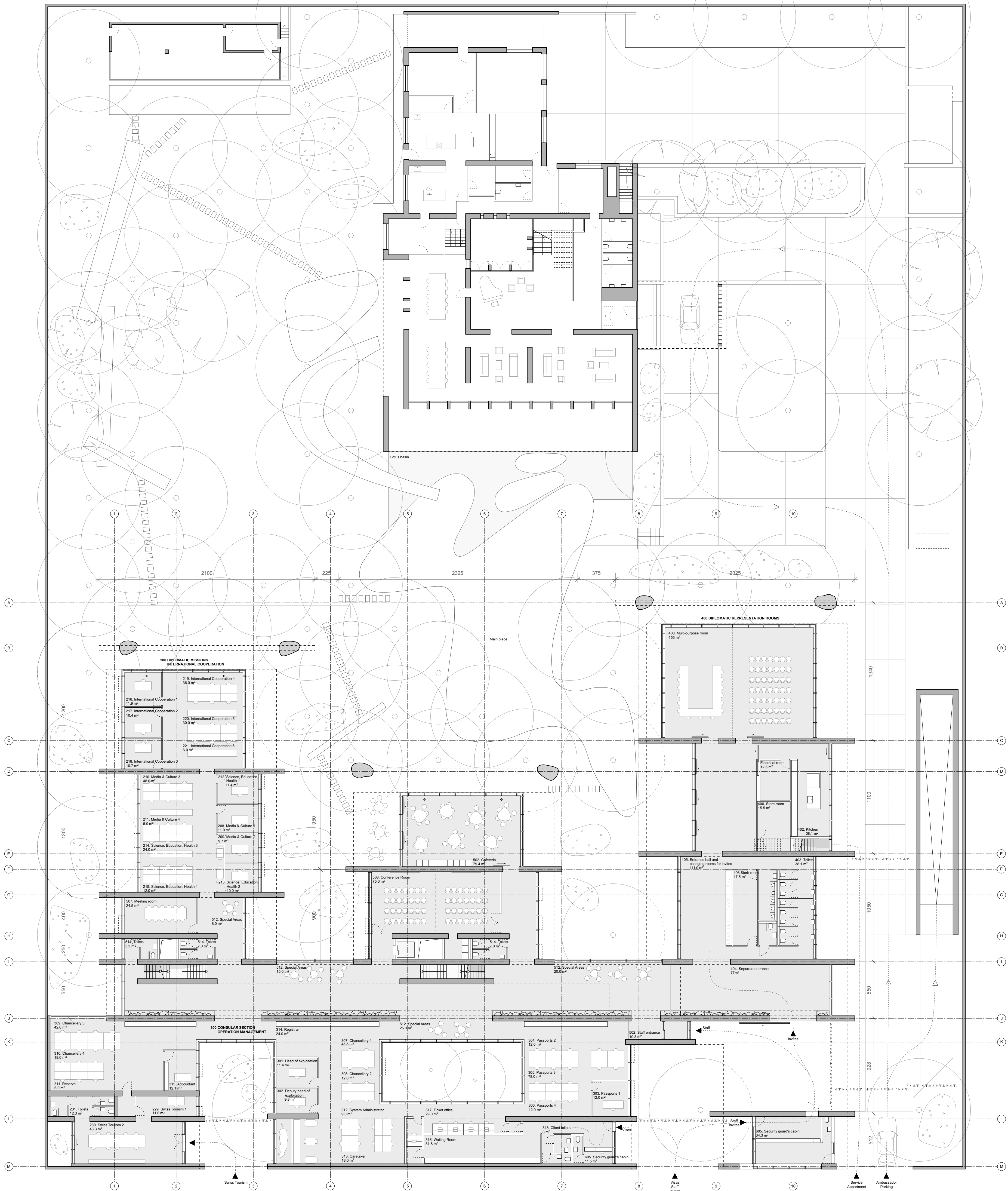
Electrical engineer
Marmy-pme sàrl
route de corsallettes 24
1772 Grolley
t. 026 552 52 52
info@marmy-pme.ch

BASEMENT

n° plan :
BEIJ18_31_PL_-1_200_A

ARCHITECT PLAN

index	date	author	modifications
A	17.12.2018	CDL / MG / MSC	Base Plans



SWISS EMBASSY, BEIJING

Sanlitun, Dongwujie 3, Beijing 100600, China

CONCEPT DESIGN

scale : 1:200
phase : schematic design
size : 740x600
reference level : $\pm 0.00 = 34 \text{ m}$

Client
Federal Department of
finance FDP
Federal Office for
Buildings and Logistics
FBL
Fellerstrasse 21
CH-3003 Berne
t. +41 58 463 26 98

Architect
Brauen Wälchli Architectes
Rue de Bourg 25
1003 Lausanne
t. 021 313 21 21
mail@brauenwaelchli.com

Landscape architect
Bureau de Paysage
Jean-Jacques Borgeaud
Avenue de Chailly 23
1012 Lausanne
t. 021 320 82 80
jjborgeaud@bluewin.ch

Structural engineer
Muttoni & Fernandez
Route du bois 17
1024 Ecublens
t. 021 691 84 70
info@mfic.ch

Facade engineer
Emmer Pfenninger Partner AG
Weidenstrasse 13
4142 Münchenstein
t. 061 416 96 96
info@eppag.ch

HVAC engineer
Efficiency-Thermique Sàrl
Rue de la Madeleine 31
1800 Vevey
t. 021 922 30 25
info@efficiency.tech

Sanitary engineer
Zanini - Baechli & Associés
avenue Ernest-Pictet 36
1203 Genève
t. 021 344 89 40
secreariat@zanini-baechli.ch

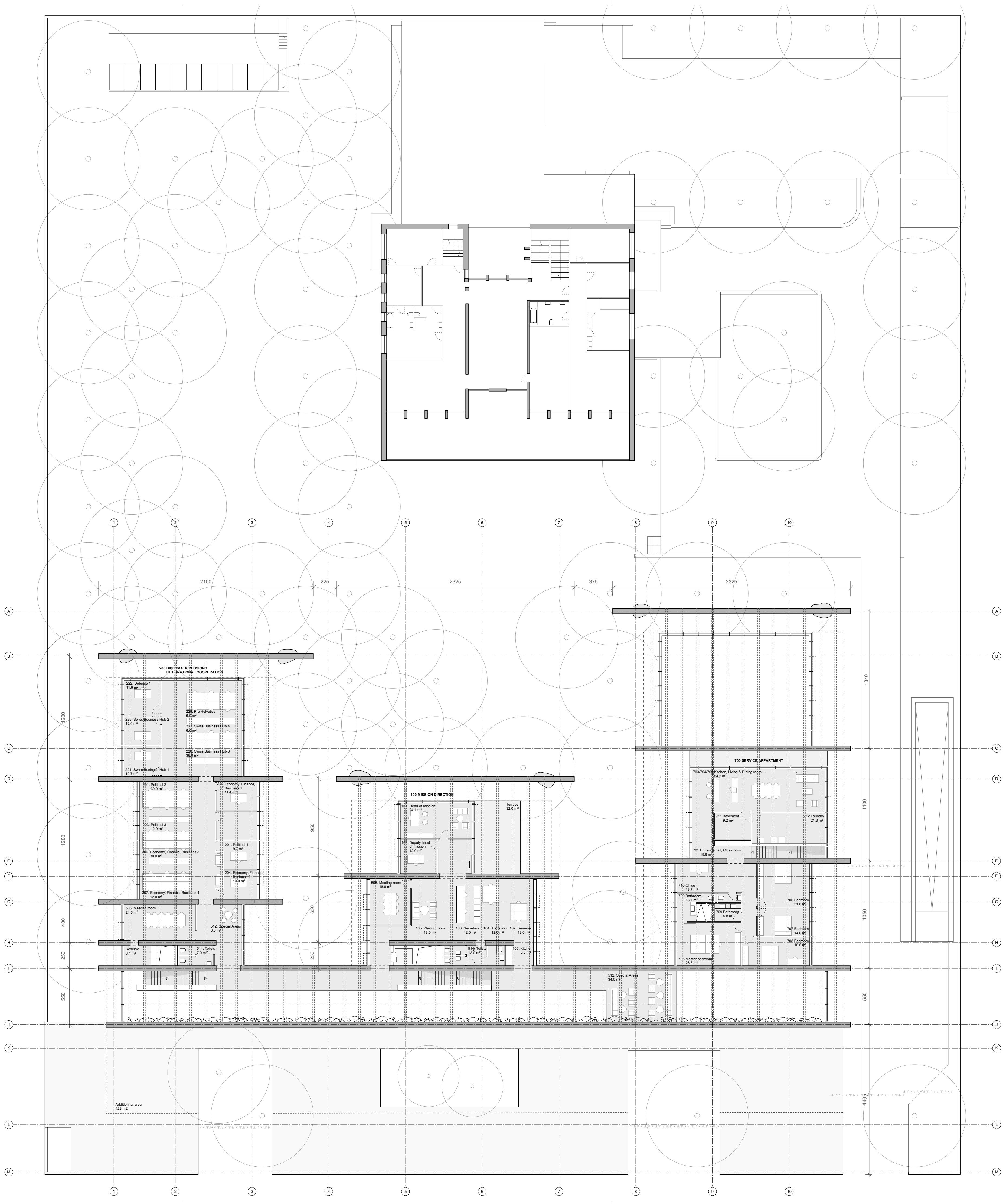
Electrical engineer
Marmy-pme sàrl
route de corsierettes 24
1772 Grolley
t. 026 552 52 52
info@marmy-pme.ch

GROUND FLOOR

n° plan :
BEIJ18_31_PL_0_200_A

ARCHITECT PLAN

index	date	author	modifications
A	17.12.2018	CDL / MG / MSC	Base Plans



SWISS EMBASSY, BEIJING

Sanlitun, Dongwujie 3, Beijing 100600, China

CONCEPT DESIGN

scale : 1:200
phase : schematic design
size : 740x600
reference level : $\pm 0.00 = 34 \text{ m}$

Client
Federal Department of
finance FDP
Federal Office for
Buildings and Logistics
FBL
Fellerstrasse 21
CH-3003 Berne
t. +41 58 463 26 98

Architect
Brauen Wälchli Architectes
Rue de Bourg 25
1003 Lausanne
t. 021 313 21 21
mail@brauenwaelchli.com

ARCHITECT PLAN

index	date	author	modifications
A	17.12.2018	CDL / MG / MSC	Base Plans

Landscape architect
Bureau de Paysage
Jean-Jacques Borgeaud
Avenue de Chailly 23
1012 Lausanne
t. 021 320 82 80
jjborgeaud@bluewin.ch

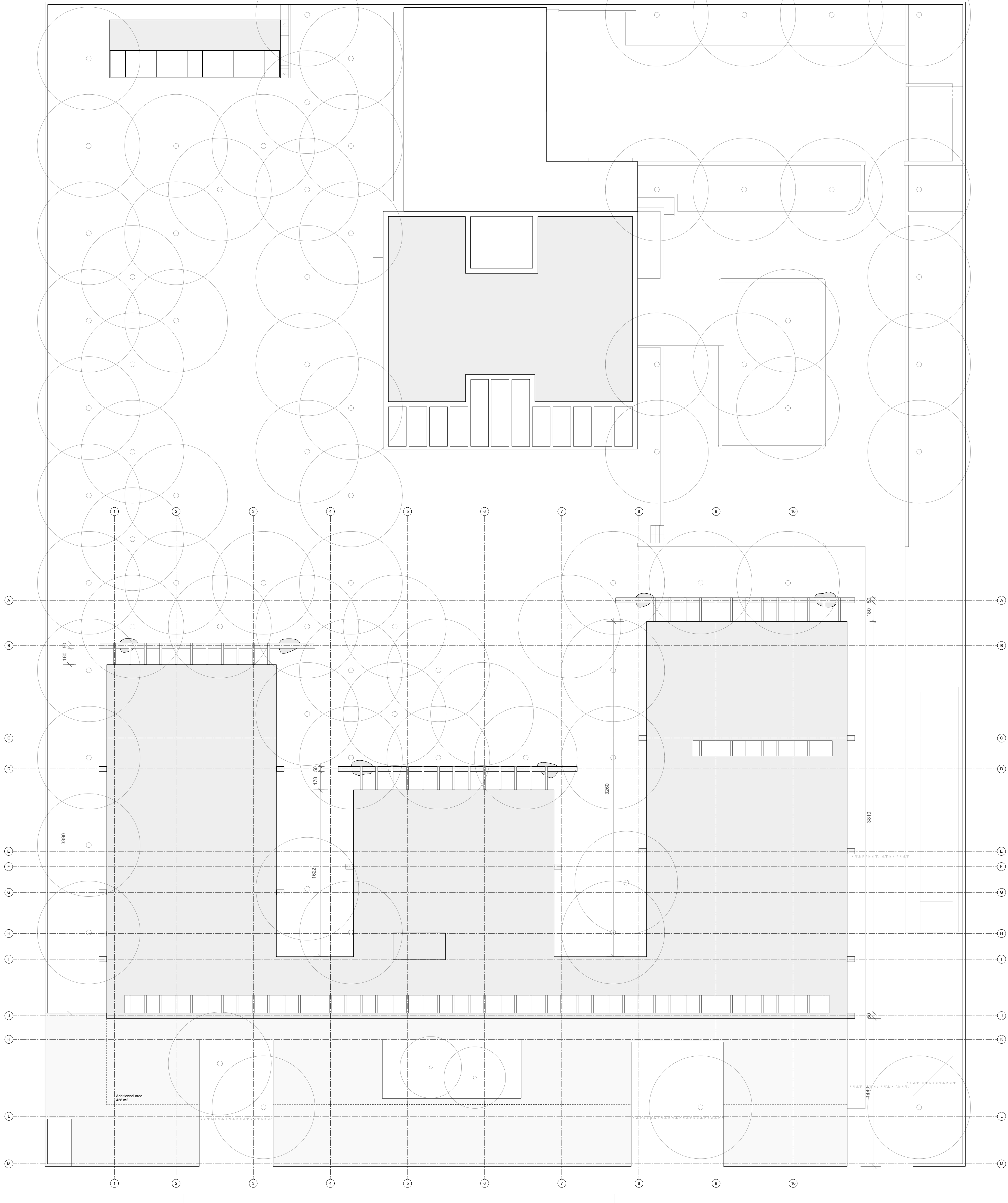
Structural engineer
Muttoni & Fernandez
Route du bois 17
1024 Ecublens
t. 021 691 84 70
info@mfic.ch

Facade engineer
Emmer Pfenninger Partner AG
Weidenstrasse 13
4142 Münchenstein
t. 061 416 96 96
info@eppag.ch

HVAC engineer
Efficiency-Thermique Sàrl
Rue de la Madeleine 31
1800 Vevey
t. 021 922 30 25
info@efficiency.tech

Sanitary engineer
Zanini - Baechli & Associés
avenue Ernest-Pictet 36
1203 Genève
t. 022 344 89 40
secretaire@zanini-baechli.ch

Electrical engineer
Marmy-pme sàrl
route de corsallies 24
1772 Grolley
t. 026 552 52 52
info@marmy-pme.ch



SWISS EMBASSY, BEIJING

Sanlitun, Dongwujie 3, Beijing 100600, China

CONCEPT DESIGN

scale : 1:200
phase : schematic design
size : 740x600
reference level : $\pm 0.00 = 34 \text{ m}$

Client
Federal Department of
finance FDP
Federal Office for
Buildings and Logistics
FBL
Fellerstrasse 21
CH-3003 Berne
t. +41 58 463 26 98

Architect
Brauen Wälchli Architects
Rue de Bourg 25
1003 Lausanne
t. 021 313 21 21
mail@brauenwaelchli.com

ARCHITECT PLAN

index	date	author	modifications
A	17.12.2018	CDL / MG / MSC	Base Plans

Landscape architect
Bureau de Paysage
Jean-Jacques Borgeaud
Avenue de Chailly 23
1012 Lausanne
t. 021 320 82 80
jjborgeaud@bluewin.ch

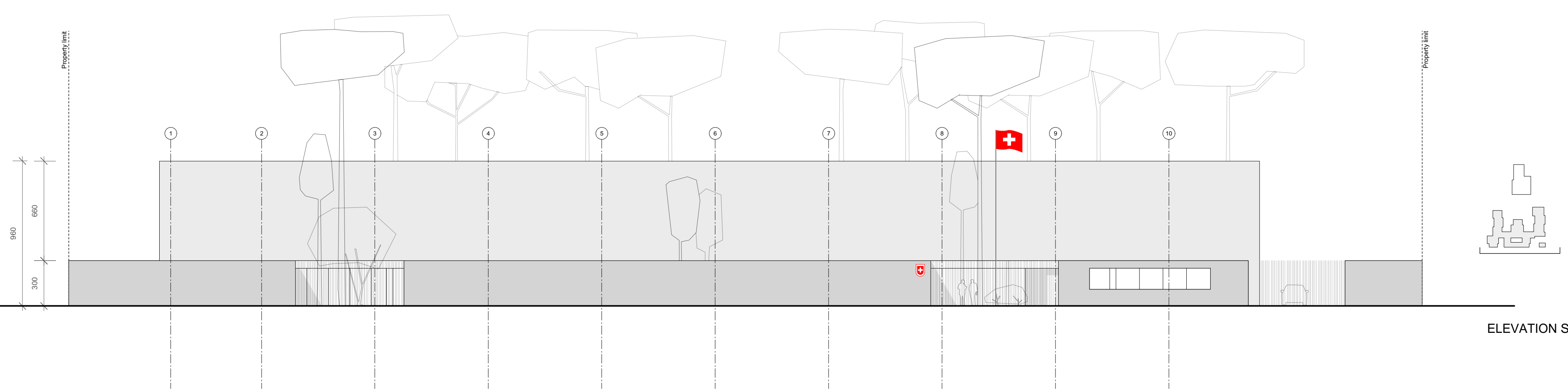
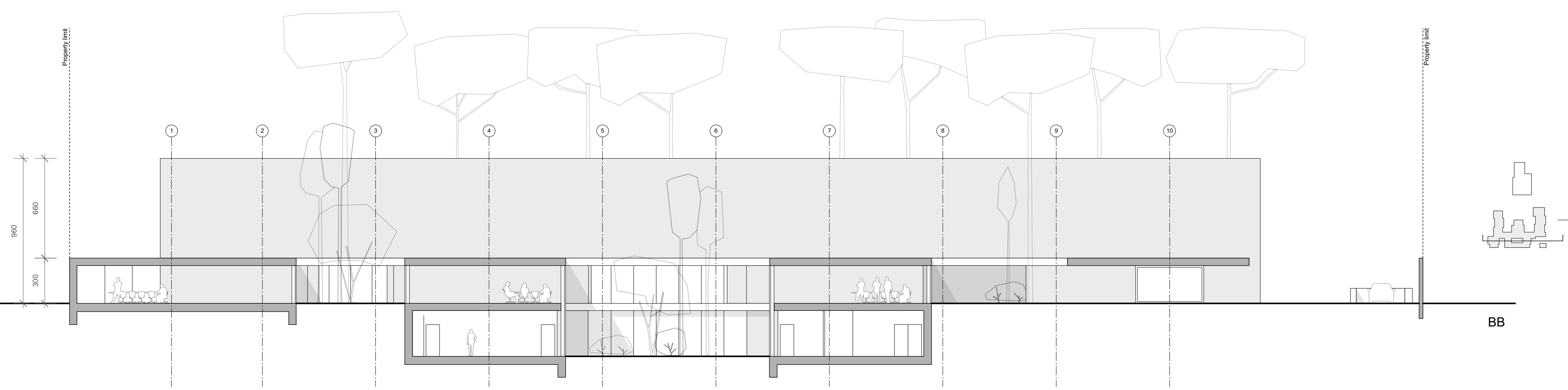
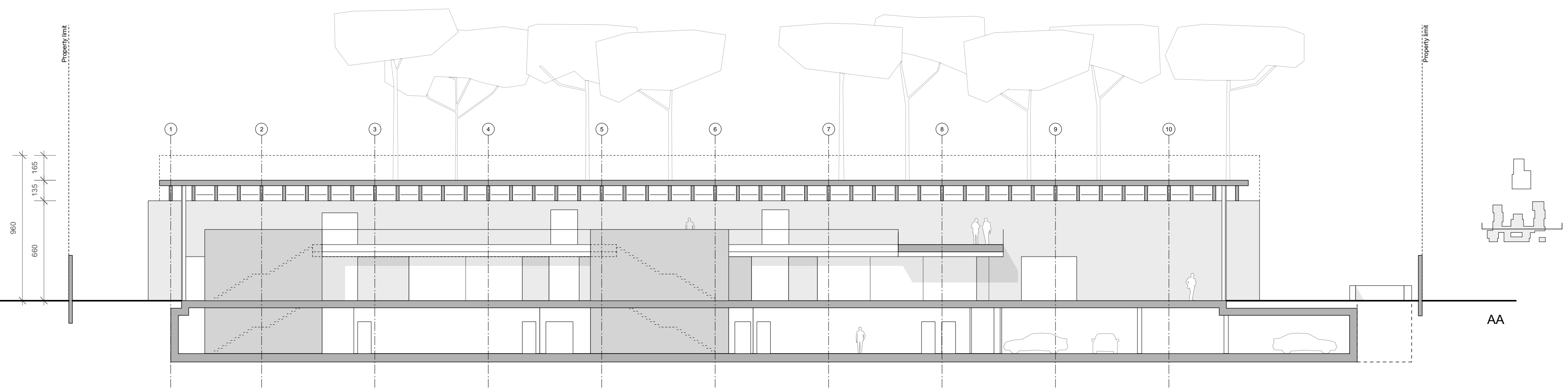
Structural engineer
Muttoni & Fernandez
Route du bois 17
1024 Ecublens
t. 021 691 84 70
info@mfic.ch

Facade engineer
Emmer Pfenninger Partner AG
Weidenstrasse 13
4142 Münchenstein
t. 061 416 96 96
info@eppag.ch

HVAC engineer
Efficiency-Thermique Sàrl
Rue de la Madeleine 31
1800 Vevey
t. 021 922 30 25
info@efficiency.tech

Sanitary engineer
Zanini - Baechli & Associés
avenue Ernest-Pictet 36
1203 Genève
t. 022 344 89 40
secretariat@zanini-baechli.ch

Electrical engineer
Marmy-pme sàrl
route de corsolieres 24
1772 Grolley
t. 026 552 52 52
info@marmy-pme.ch



SWISS EMBASSY, BEIJING

Sanlitun, Dongwujie 3, Beijing 100600, China

CONCEPT DESIGN

scale : 1:200
phase : schematic design
size : 740x600
reference level : $\pm 0.00 = 34 \text{ m}$

SECTIONS AA - BB

n° plan :
BEIJ18_31_CP_01_200_A

ARCHITECT PLAN

index	date	author	modifications
A	17.12.2018	CDL / MG / MSC	Base Sections

Client
Federal Department of
finance FDP
**Federal Office for
Buildings and Logistics**
FBL
Fellerstrasse 21
CH-3003 Berne
t. +41 58 463 26 98

Architect
Brauen Wälchli Architectes
Rue de Bourg 25
1003 Lausanne
t. 021 313 21 21
mail@brauenwaelchli.com

Landscape architect
Bureau de Paysage
Jean-Jacques Borgeaud
Avenue de Chailly 23
1012 Lausanne
t. 021 320 82 80
jjborgeaud@bluewin.ch

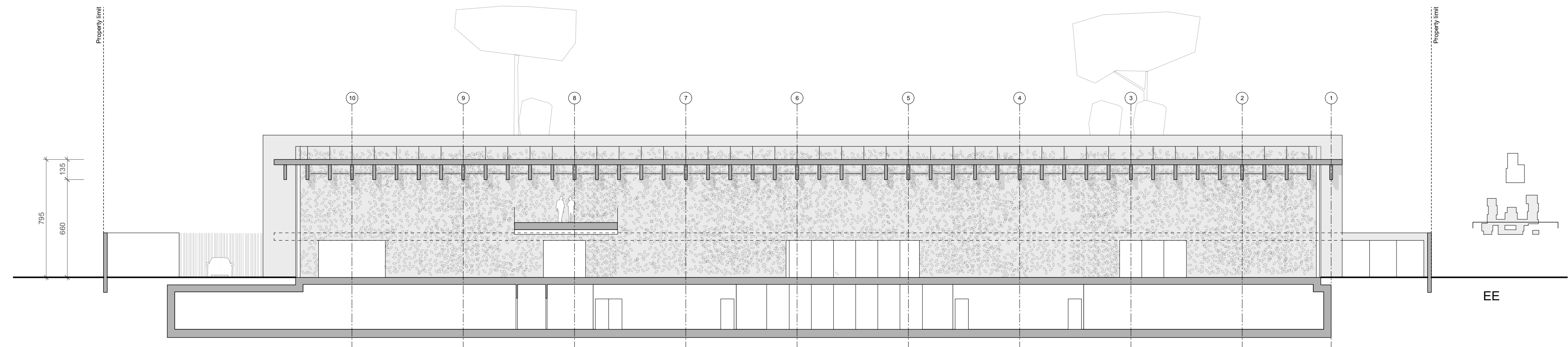
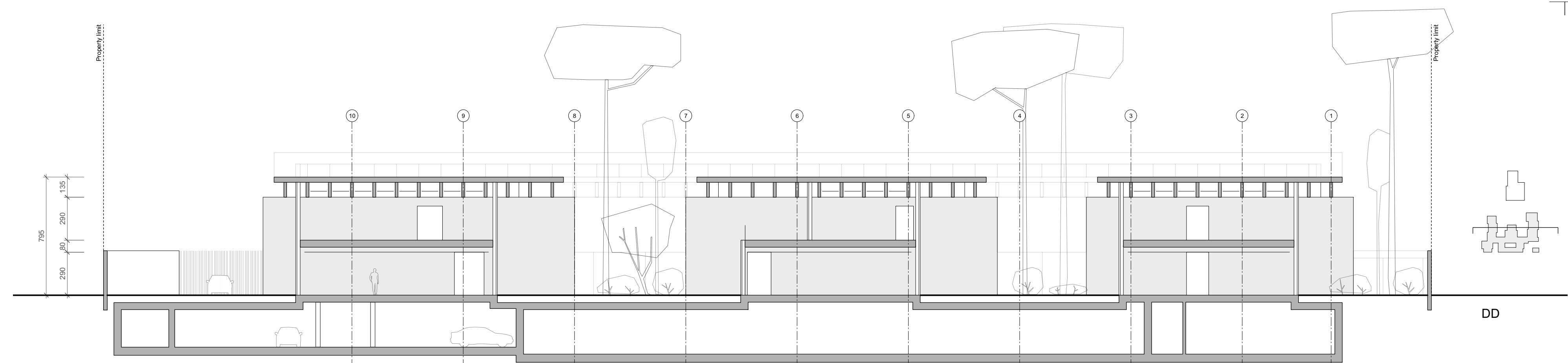
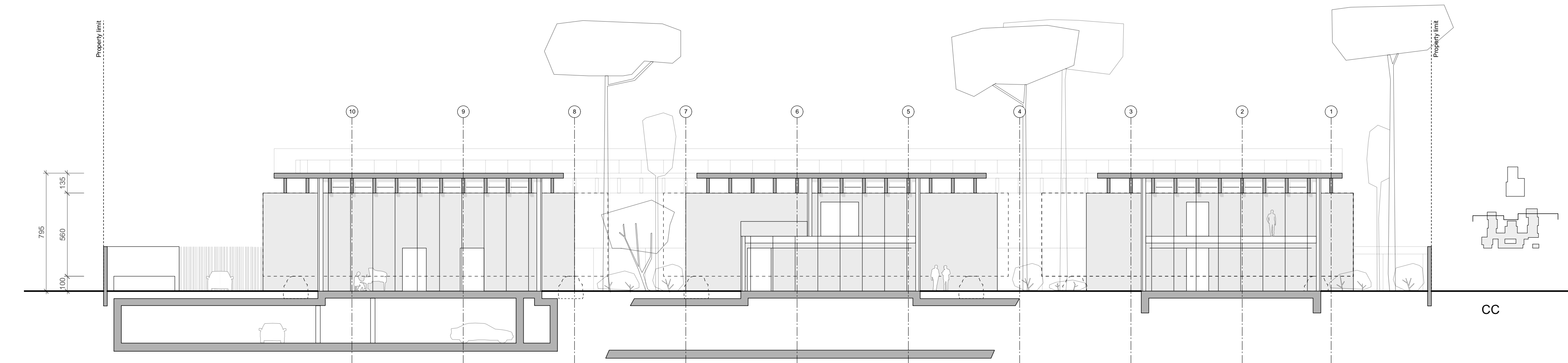
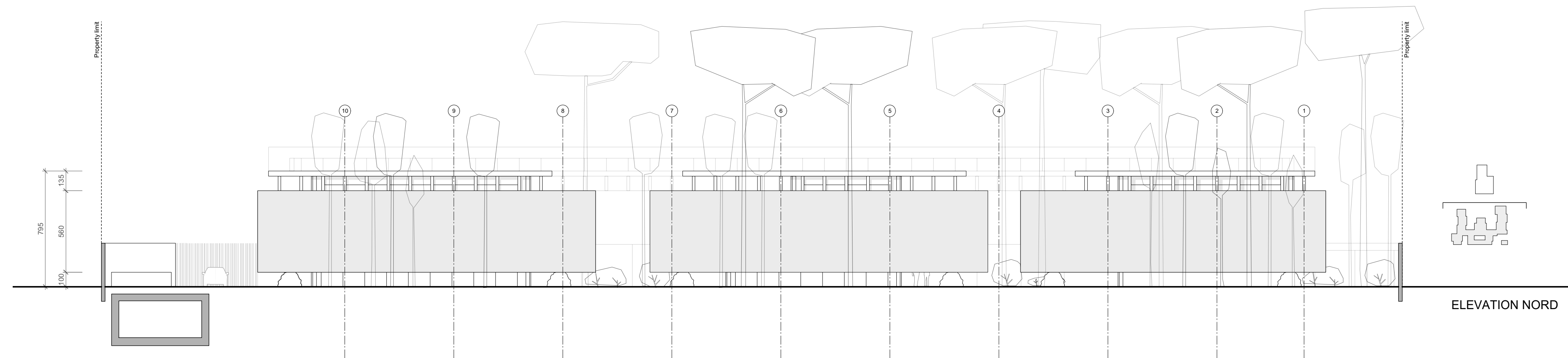
Structural engineer
Muttoni & Fernandez
Route du bois 17
1024 Ecublens
t. 021 691 84 70
info@mfic.ch

Facade engineer
Emmer Pfenninger Partner AG
Weidenstrasse 13
4142 Münchenstein
t. 061 416 96 96
info@eppag.ch

HVAC engineer
Efficiency-Thermique Sàrl
Rue de la Madeleine 31
1800 Vevey
t. 021 922 30 25
info@efficiency.tech

Sanitary engineer
Zanini - Baechli & Associés
avenue Ernest-Pictet 36
1203 Genève
t. 022 344 89 40
secretariat@zanini-baechli.ch

Electrical engineer
Marmy-pme sàrl
route de corsierettes 24
1772 Grolley
t. 026 552 52 52
info@marmy-pme.ch



SWISS EMBASSY, BEIJING

Sanlitun, Dongwujie 3, Beijing 100600, China

CONCEPT DESIGN

scale : 1:200
phase : schematic design
size : 740x600
reference level : $\pm 0.00 = 34 \text{ m}$

Client
Federal Department of
finance FDP
Federal Office for
Buildings and Logistics
FBL
Fellerstrasse 21
CH-3003 Berne
t. +41 58 463 26 98

Architect
Brauen Wälchli Architectes
Rue de Bourg 25
1003 Lausanne
t. 021 313 21 21
mail@brauenwaelchli.com

Landscape architect
Bureau de Paysage
Jean-Jacques Borgeaud
Avenue de Chailly 23
1012 Lausanne
t. 021 320 82 80
jjborgeaud@bluewin.ch

Structural engineer
Muttoni & Fernandez
Route du bois 17
1024 Ecublens
t. 021 691 84 70
info@mfc.ch

Facade engineer
Emmer Pfenninger Partner AG
Weidenstrasse 13
4142 Münchenstein
t. 061 416 96 96
info@eppag.ch

HVAC engineer
Efficiency-Thermique Sàrl
Rue de la Madeleine 31
1800 Vevey
t. 021 922 30 25
info@efficiency.tech

Sanitary engineer
Zanini - Baechli & Associés
avenue Ernest-Pictet 36
1203 Genève
t. 022 344 89 40
secretariat@zanini-baechli.ch

Electrical engineer
Marmy-pme sàrl
route de corsallettes 24
1772 Grolley
t. 026 552 52 52
info@marmy-pme.ch

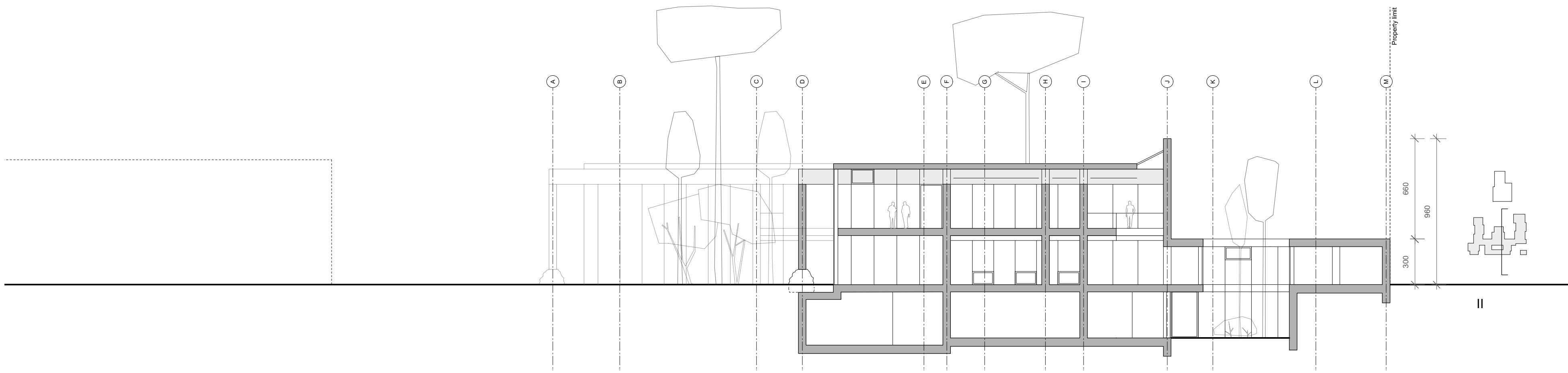
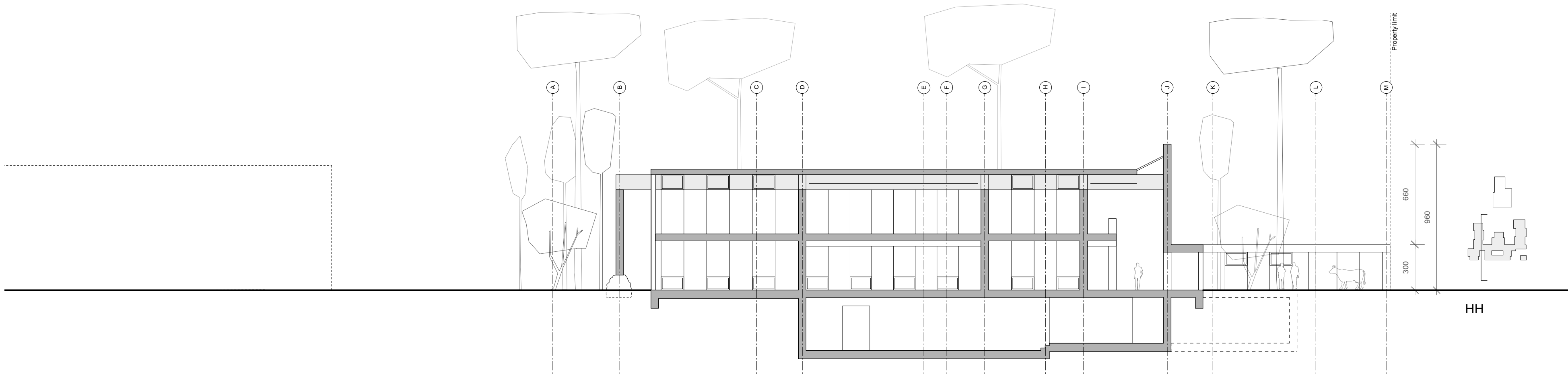
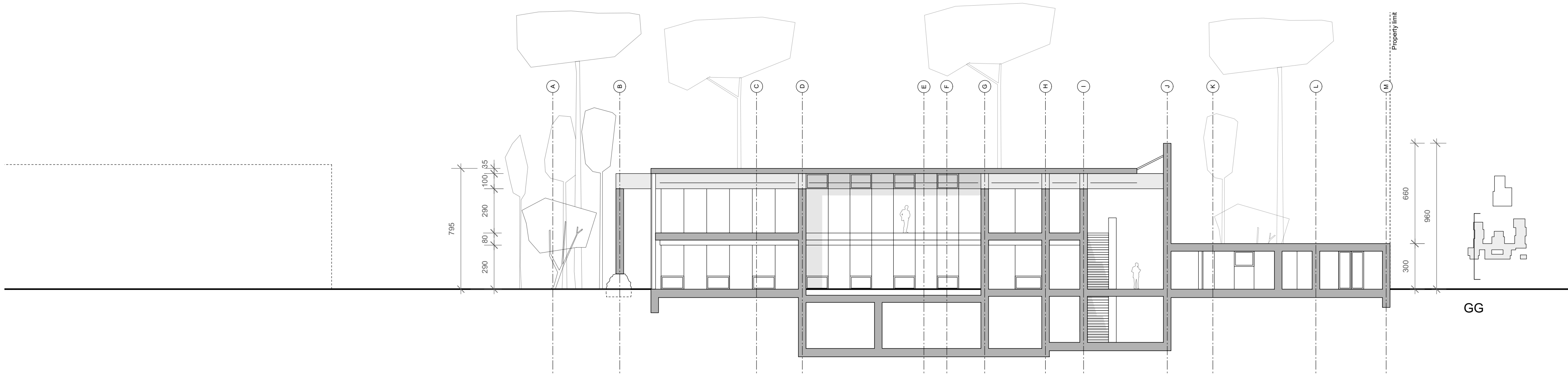
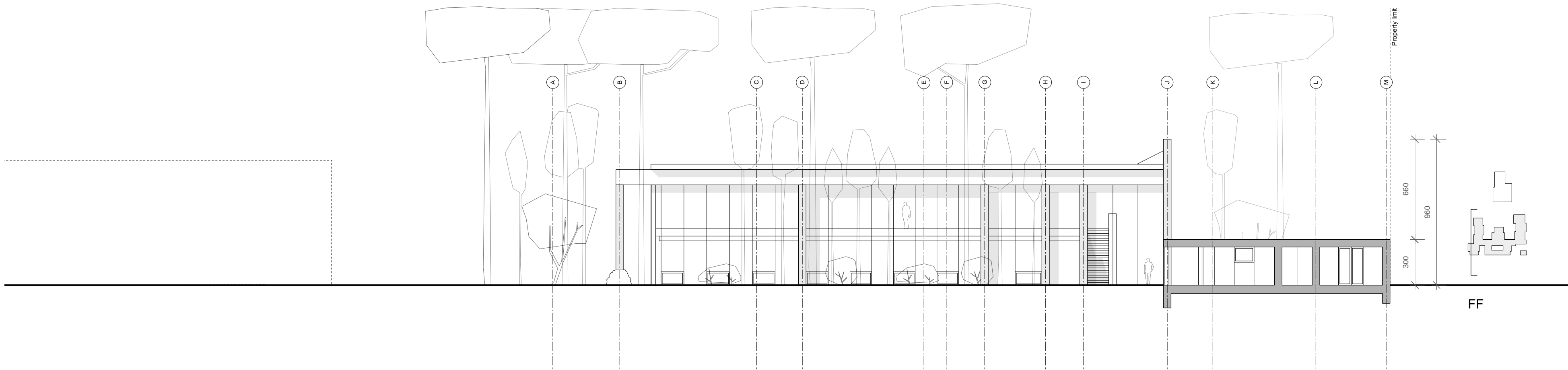
SECTIONS CC - EE

n° plan :

BEIJ18_31_CP_02_200_A

ARCHITECT PLAN

index	date	author	modifications
A	17.12.2018	CDL / MG / MSC	Base Sections



SWISS EMBASSY, BEIJING

Sanlitun, Dongwujie 3, Beijing 100600, China

CONCEPT DESIGN

scale : 1:200
phase : schematic design
size : 740x600
reference level : $\pm 0.00 = 34 \text{ m}$

Client
Federal Department of
finance FDP
**Federal Office for
Buildings and Logistics**
FBL
Fellerstrasse 21
CH-3003 Berne
t. +41 58 463 26 98
Architect
Brauen Wälchli Architectes
Rue de Bourg 25
1003 Lausanne
t. 021 313 21 21
mail@brauenwaelchli.com

Landscape architect
Bureau de Paysage
Jean-Jacques Borgeaud
Avenue de Chailly 23
1012 Lausanne
t. 021 320 82 80
jjborgeaud@bluewin.ch

Structural engineer
Muttoni & Fernandez
Route du bois 17
1024 Ecublens
t. 021 691 84 70
info@mfic.ch

Facade engineer
Emmer Pfenninger Partner AG
Weidenstrasse 13
4142 Münchenstein
t. 061 416 96 96
info@eppag.ch

HVAC engineer
Efficiency-Thermique Sàrl
Rue de la Madeleine 31
1800 Vevey
t. 021 922 30 25
info@efficiency.tech

Sanitary engineer
Zanini - Baechli & Associés
avenue Ernest-Pictet 36
1203 Genève
t. 022 344 89 40
secretaire@zanini-baechli.ch

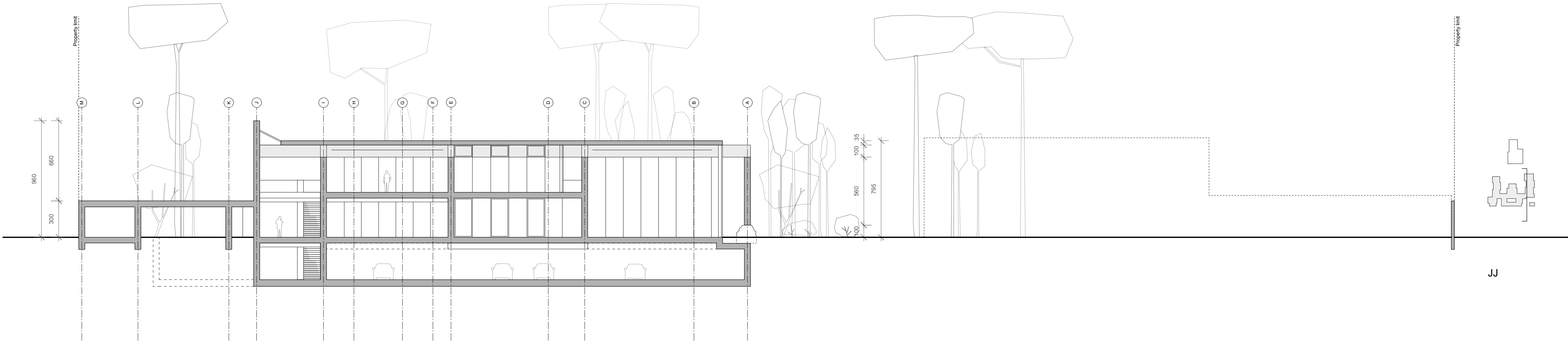
Electrical engineer
Marmy-pme sàrl
route de corsallettes 24
1772 Grolley
t. 026 552 52 52
info@marmy-pme.ch

SECTIONS FF - II

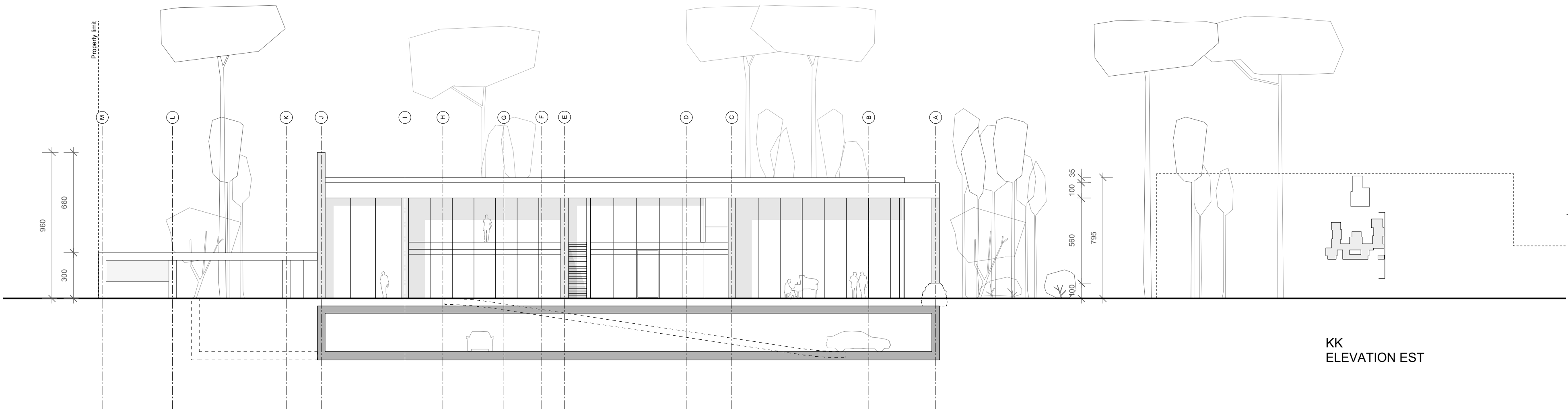
n° plan :
BEIJ18_31_CP_03_200_A

ARCHITECT PLAN

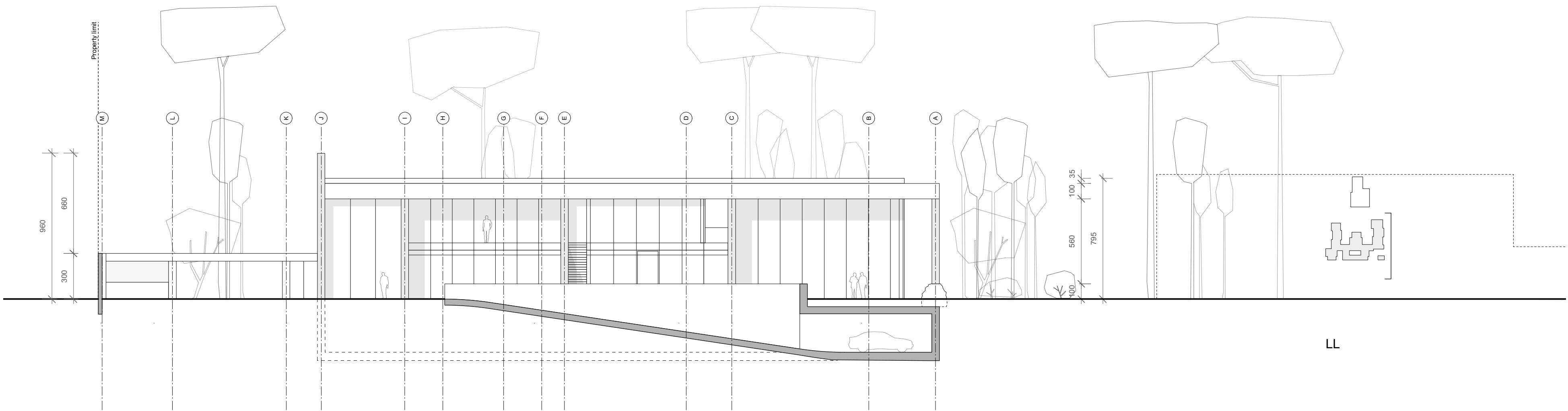
index	date	author	modifications
A	17.12.2018	CDL / MG / MSC	Base Sections



JJ



KK
ELEVATION EST



LL

SWISS EMBASSY, BEIJING

Sanlitun, Dongwujie 3, Beijing 100600, China

CONCEPT DESIGN

scale : 1:200
phase : schematic design
size : 740x600
reference level : $\pm 0.00 = 34 \text{ m}$

Client
Federal Department of
finance FDP
Federal Office for
Buildings and Logistics
FBL
Fellerstrasse 21
CH-3003 Berne
t. +41 58 463 26 98
Architect
Brauen Wälchli Architectes
Rue de Bourg 25
1003 Lausanne
t. 021 313 21 21
mail@brauenwaelchli.com

BRÄUEN WÄLCHLI
ARCHITECTES

ARCHITECT PLAN

index	date	author	modifications
A	17.12.2018	CDL / MG / MSC	Base Sections

Landscape architect
Bureau de Paysage
Jean-Jacques Borgeaud
Avenue de Chailly 23
1012 Lausanne
t. 021 320 82 80
jjborgeaud@bluewin.ch

Structural engineer
Muttoni & Fernandez
Route du bois 17
1024 Ecublens
t. 021 691 84 70
info@mffc.ch

Facade engineer
Emmer Pfenninger Partner AG
Weidenstrasse 13
4142 Münchenstein
t. 061 416 96 96
info@eppag.ch

HVAC engineer
Efficiency-Thermique Sàrl
Rue de la Madeleine 31
1800 Vevey
t. 021 922 30 25
info@efficiency.tech

Sanitary engineer
Zanini - Baechli & Associés
avenue Ernest-Pictet 36
1203 Genève
t. 022 344 89 40
secretariat@zanini-baechli.ch

Electrical engineer
Marmy-pme sàrl
route de corsierettes 24
1772 Grolley
t. 026 552 52 52
info@marmy-pme.ch